

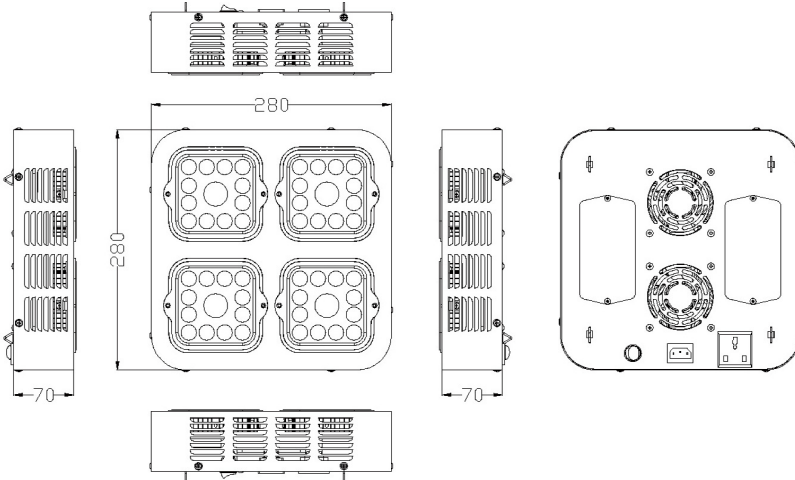
HI58D-140W LED GROW LIGHTS



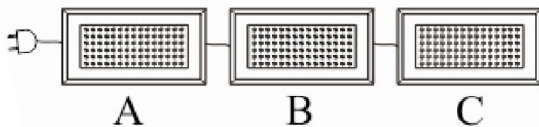
Application

Installed by qualified electrician:

◆ Dimensions



◆ Connection

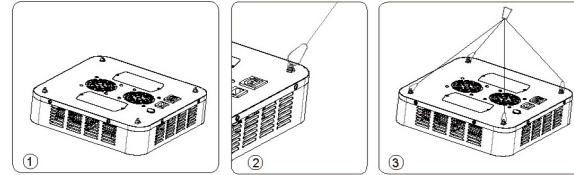


1. Maximum can connect 3pcs
 2. Total power cannot exceed
 110V: A+B+C ≤ 800W
 220V: A+B+C ≤ 1200W

◆ Technology Parameter

Optical Parameter		Electrical Parameter		Others	
Emitting Colors	Red, Full spectrum, Blue	Input Voltage	100~240V	Lamp Color	Gray
Wavelength	Full spectrum: 660nm:470nm: 640nm:440nm:460nm:630nm =4:2:2:2:1:7	Input Current	0.5732A	Fixture Size	L280*W280*H70 MM
Emitting Angle	120°	Output Voltage	100~130V	Inside Packing Size	No
The two lens light angle	120°	Output Current	500mA	Out Packing Size	L340*W340* H180MM/PCS
LED Qty	80PCS	Output Power	140±10W	Net Weight	2.8kg
LED Life	50000H	Power Factor	>0.9/220V	Gross Weight	3.7kg
Luminous Flux(LM)	5281.6lm	Environment temperature	-20~50°C	Product temperature	<55°C

◆ Installation Instructions



- 1) From figure 1 to figure 2, connect the suspension wire to the corresponding screw mount.
- 2) Figure 3, put the other end of all the suspension wires to the hooks together.
- 3) Hang from suitable mounting hook on the building structure.

◆ Replacement Instruction



Replace Power Supply

Replace Light-Module



◆ Notes:

- 1) Please read the manual before installation, confirm the lighting environment.
- 2) Please confirm the power supply before use.
- 3) When the product is connected to a power source, make sure the power switch is in the off state.
- 4) When this lamp is operating, do not touch the surface.
- 5) The lamp is only for indoor use.
- 6) Illegal operation may damage your goods, and even endanger the life.

CE, RoHS Certified.
Product complies with UL/FCC etc.
Safety standards.

