

CITTERIO RANGE

design by Spazio



- Aluminium body
- Plastic inner
- Anti-glare downlight
- Adjustable
- Available in:
 - 3000K or 4000K
- Requires LED Module (Fig. 1)
- Beam angles
 - 15° (Fig. 2)
 - 38° (Fig. 3)
 - 55° (Fig. 4)
- Class II
- IP 20

Fig. 1



Fig. 2

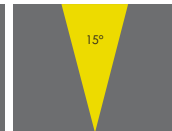


Fig. 3

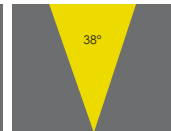
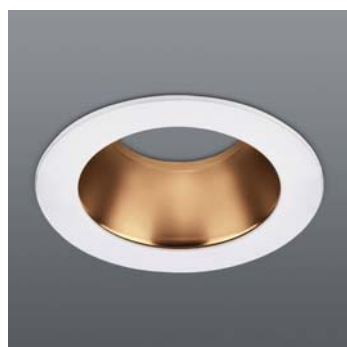


Fig. 4



CITTERIO RANGE

design by Spazio

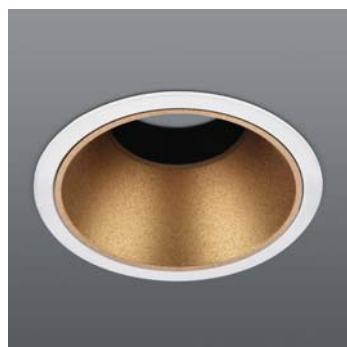
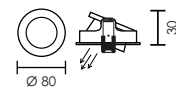


code lamp details

CITTERIO Adjustable

- 2202.1.11.31
- 2202.1.21.31
- 2202.1.30.31
- 2202.1.31.31

Requires LED Module.

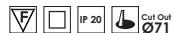


code lamp details

CITTERIO Rear adjustable

- 2202.2.11.31
- 2202.2.21.31
- 2202.2.30.31
- 2202.2.31.31

Requires LED Module.

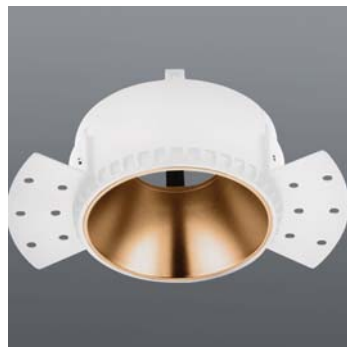
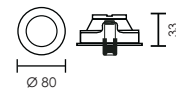


code lamp details

CITTERIO Keyhole

- 2202.3.30
- 2202.3.31

Requires LED Module.

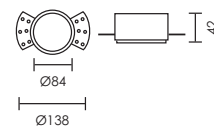


code lamp details

CITTERIO Rimless

- 2202.4.11.31
- 2202.4.21.31
- 2202.4.30.31
- 2202.4.31.31

Requires LED Module.



code lamp details

CITTERIO Module

- 3000K:
- 2202.10.30.15.MODULE 10W / 15°
 - 2202.10.30.38.MODULE 10W / 38°
 - 2202.10.30.55.MODULE 10W / 55°
- 4000K:
- 2202.10.40.15.MODULE 10W / 15°
 - 2202.10.40.38.MODULE 10W / 38°
 - 2202.10.40.55.MODULE 10W / 55°

For use with Citterio downlight

Dimmable

CRI > 90

